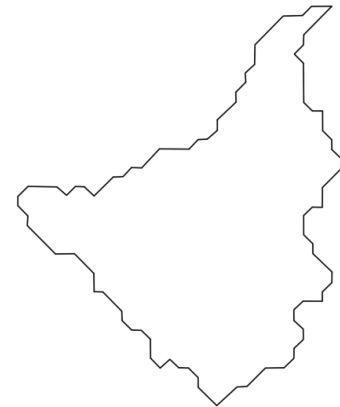
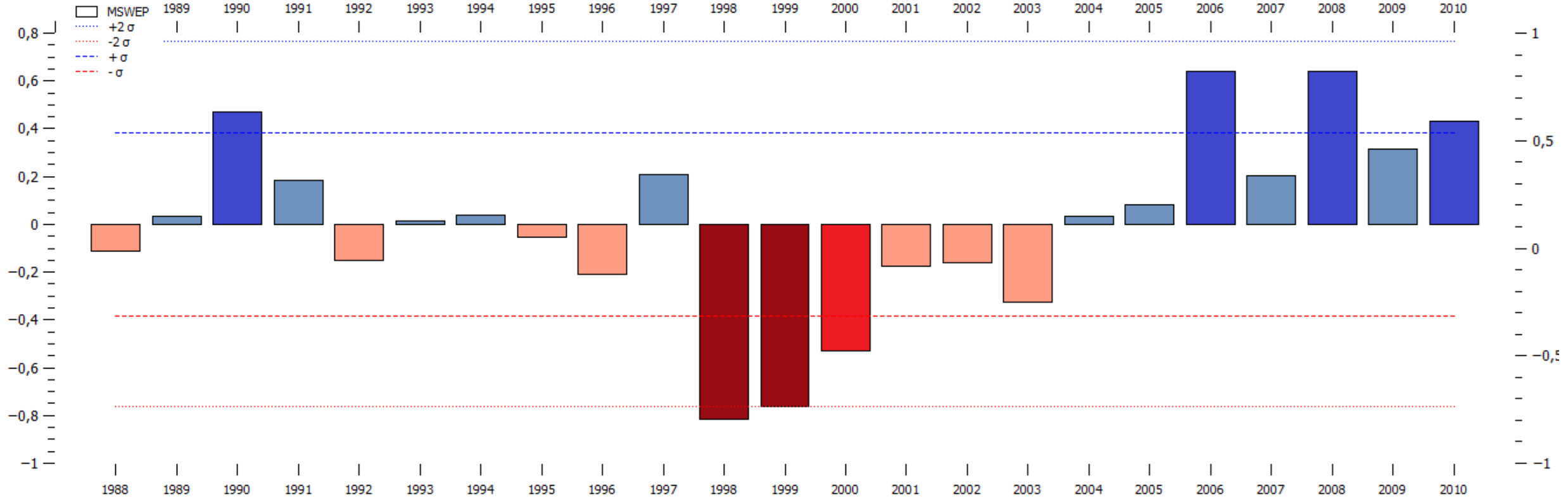


Hindcasts Eta-BESM

Hindcasts Eta-BESM

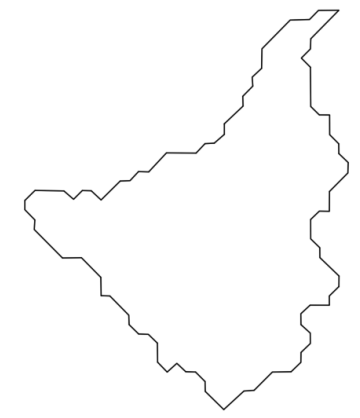
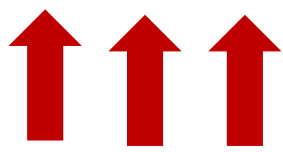
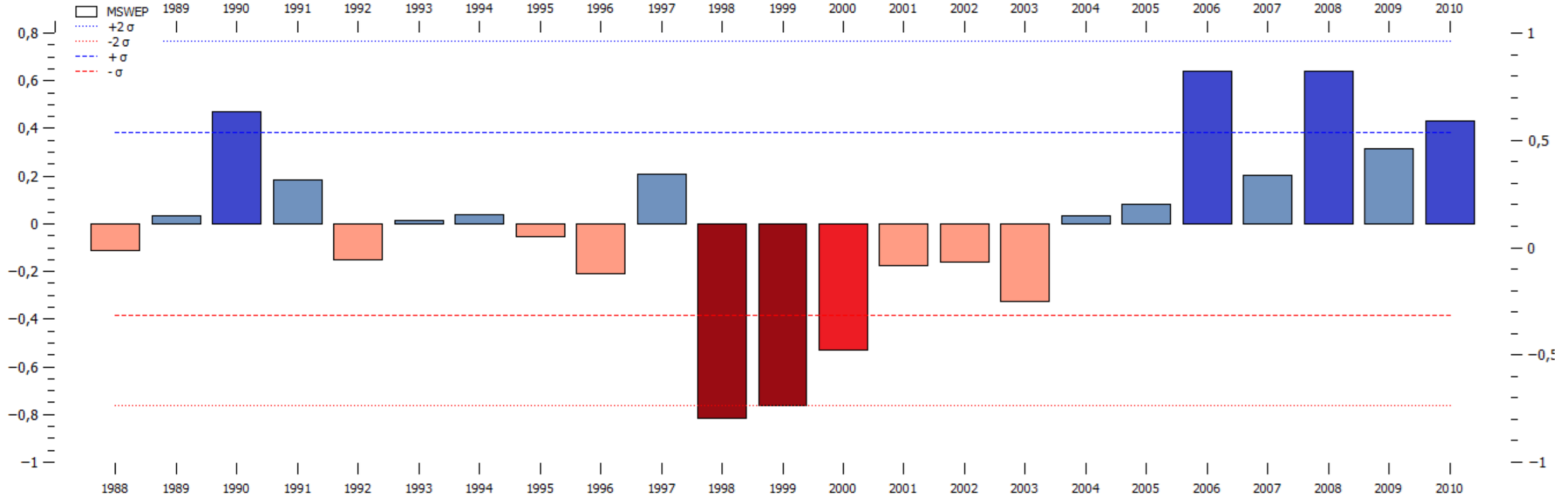
- Previsões do modelo regional Eta40km aninhado ao BESM, iniciadas em 01 de novembro de cada ano entre 1988 e 2010.
- As previsões foram validadas para os meses de dezembro (mês 2), janeiro (mês 3) e fevereiro (mês 4);
- Cobrem toda a América do Sul;
- Resolução de 40km;

Série temporal de anomalias padronizadas de precipitação para DJF Rio Madeira - MSWEP (observado)



Bacia do Rio
Madeira

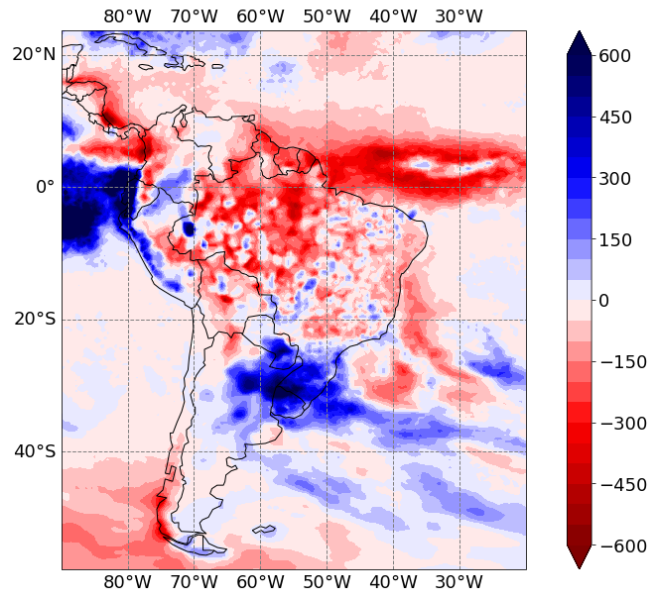
Série temporal de anomalias padronizadas de precipitação para DJF Rio Madeira - MSWEP (observado)



Bacia do Rio Madeira

OBSERVADO

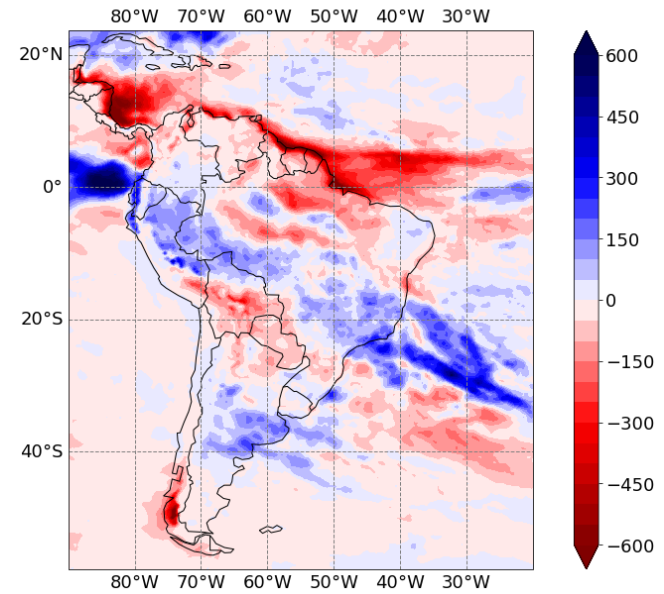
Anomalia PREC(mm) MSWEP - 1998 DJF



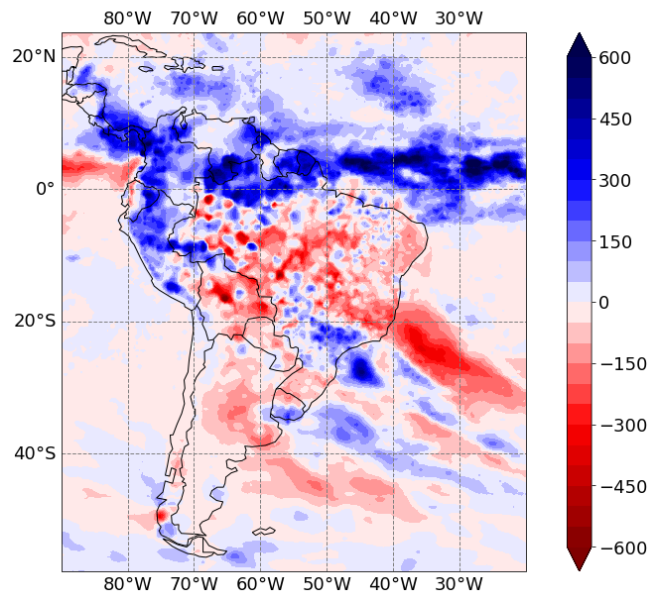
1998

PREVISTO

Anomalia PREC(mm) Eta40km-Besm - 1998 DJF

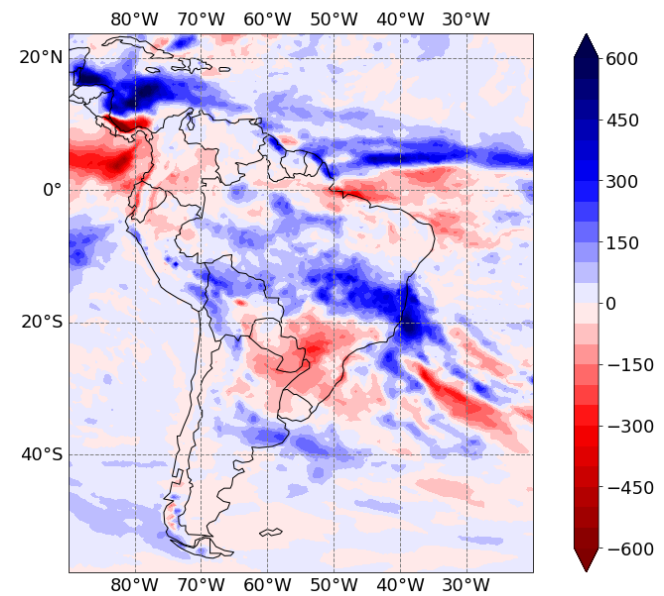


Anomalia PREC(mm) MSWEP - 1999 DJF



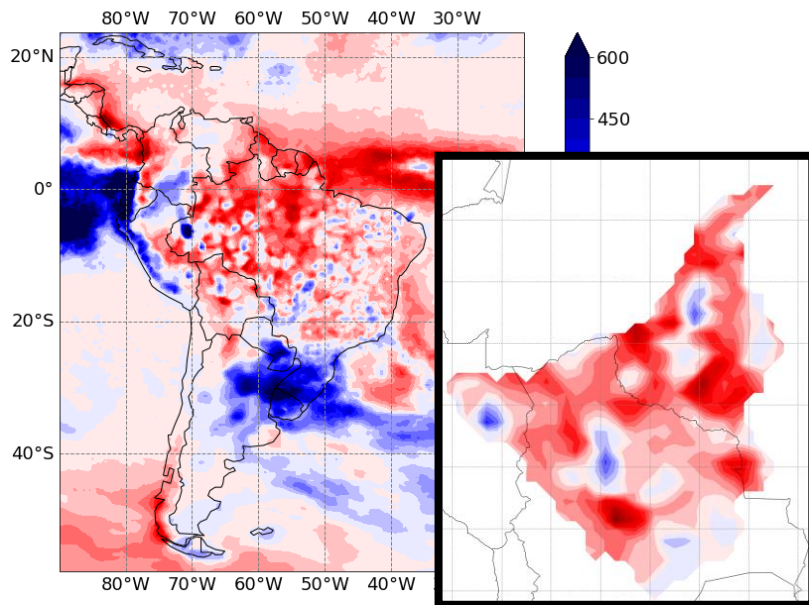
1999

Anomalia PREC(mm) Eta40km-Besm - 1999 DJF



OBSERVADO

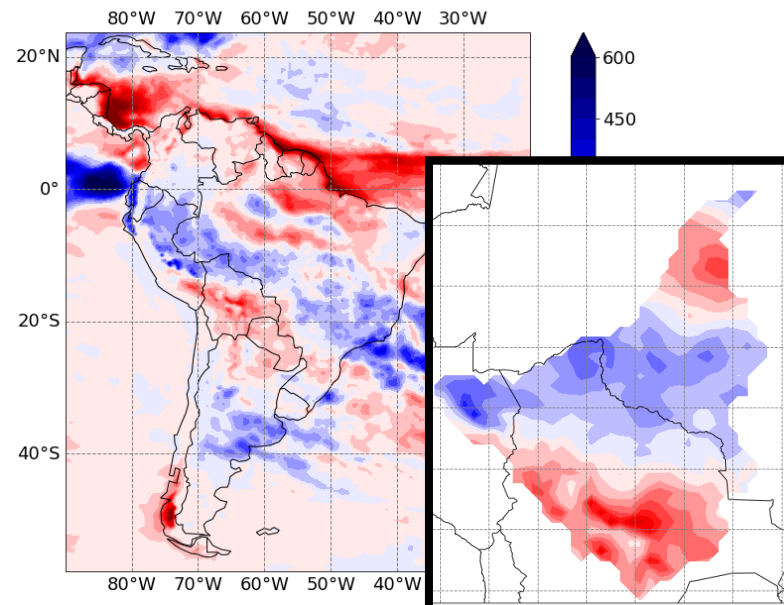
Anomalia PREC(mm) MSWEP - 1998 DJF



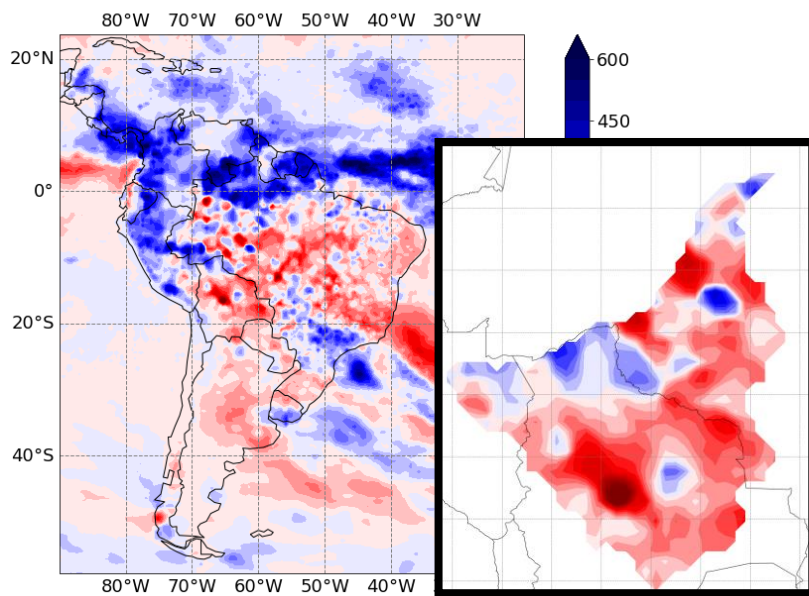
1998

PREVISTO

Anomalia PREC(mm) Eta40km-Besm - 1998 DJF

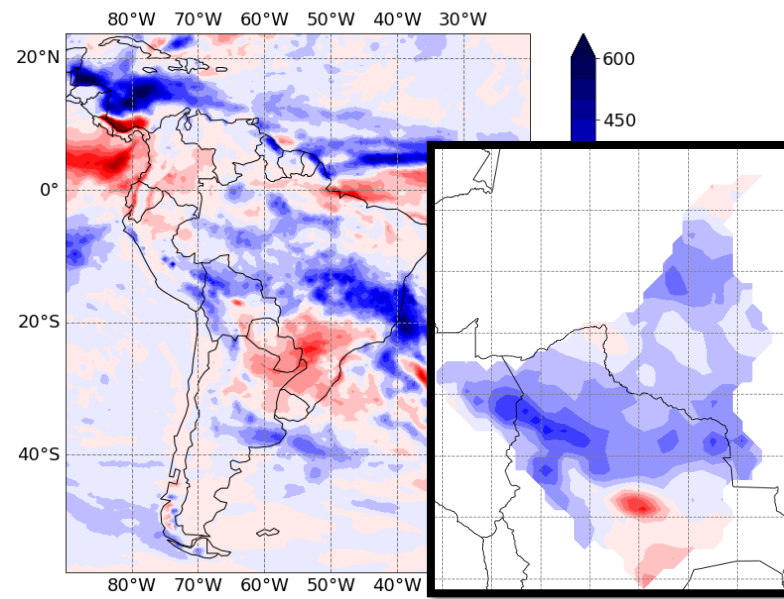


Anomalia PREC(mm) MSWEP - 1999 DJF



1999

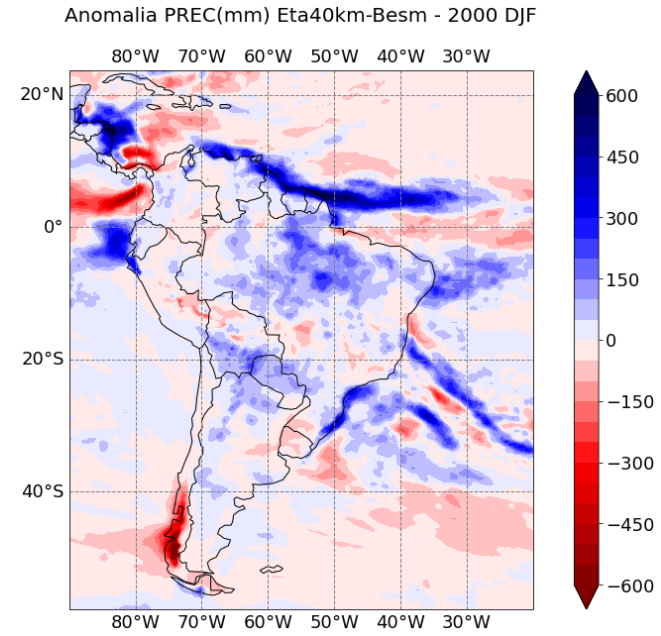
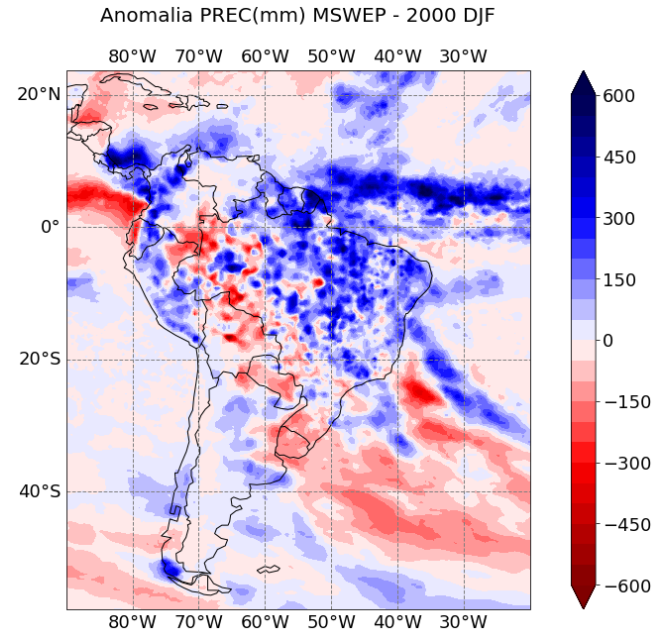
Anomalia PREC(mm) Eta40km-Besm - 1999 DJF



OBSERVADO

PREVISTO

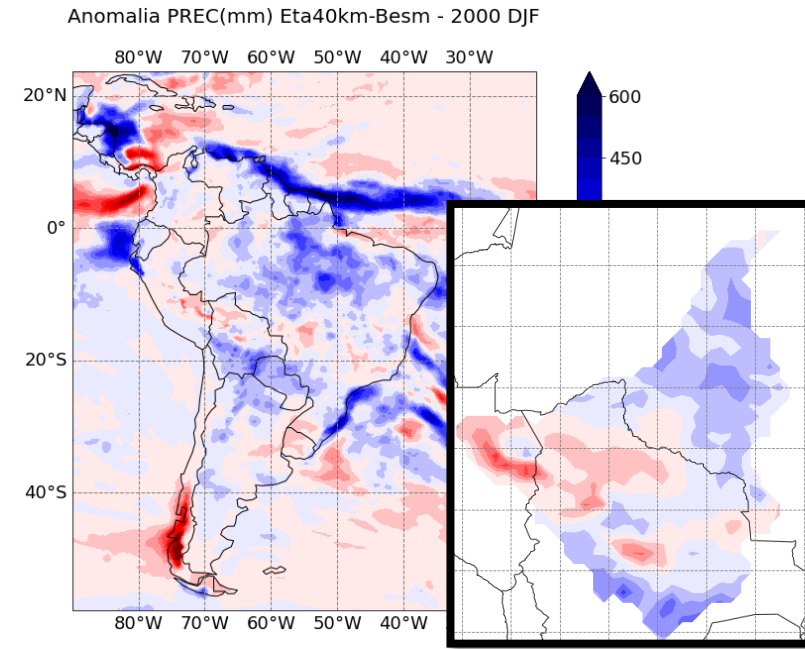
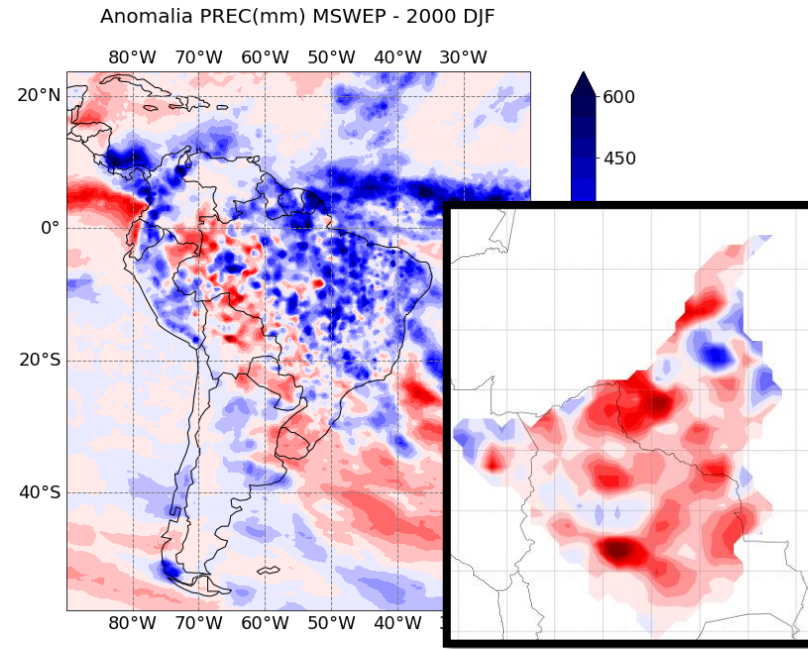
2000



OBSERVADO

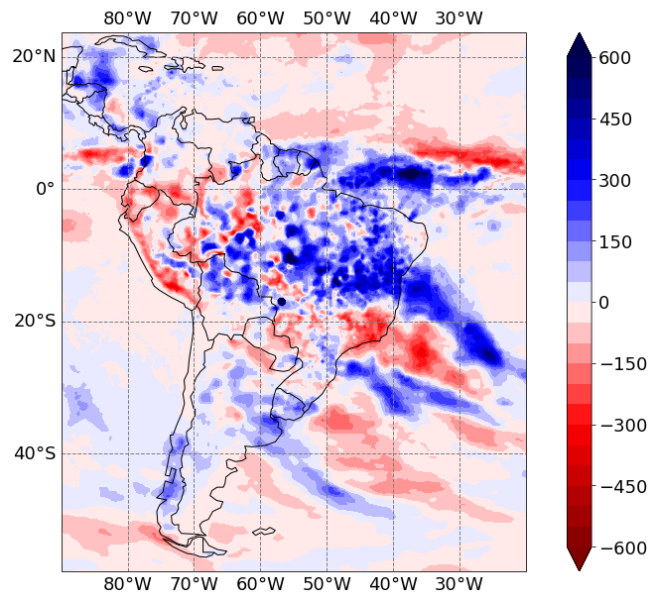
PREVISTO

2000



OBSERVADO

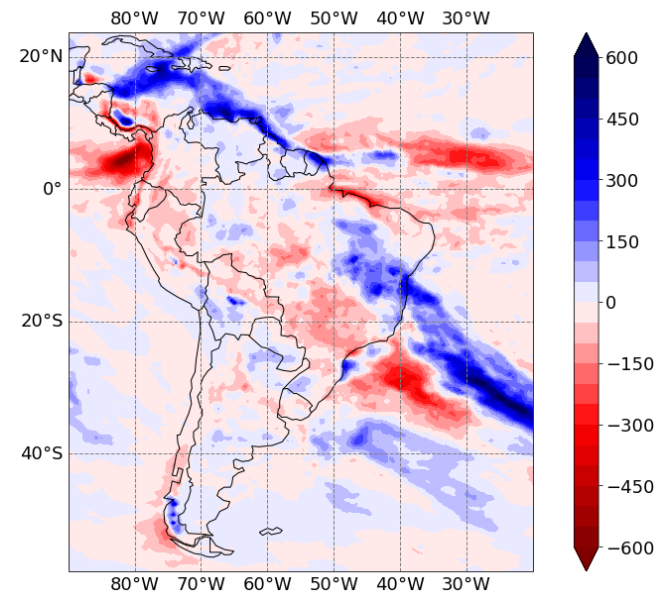
Anomalia PREC(mm) MSWEP - 1990 DJF



1990

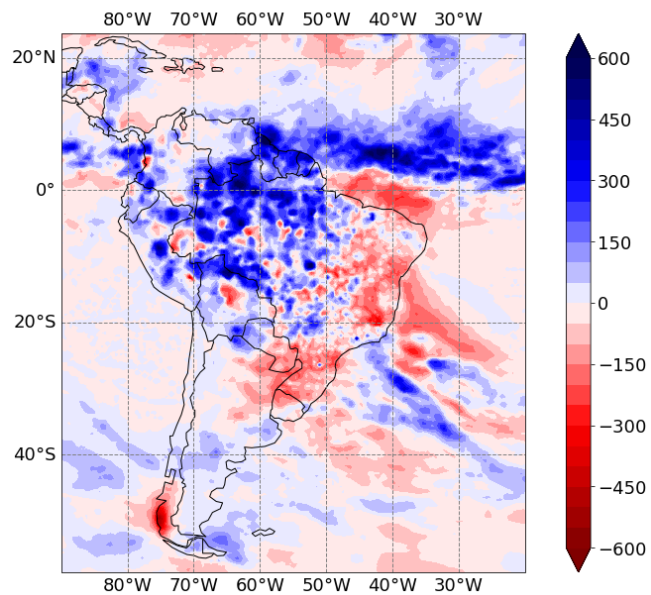
PREVISTO

Anomalia PREC(mm) Eta40km-Besm - 1990 DJF

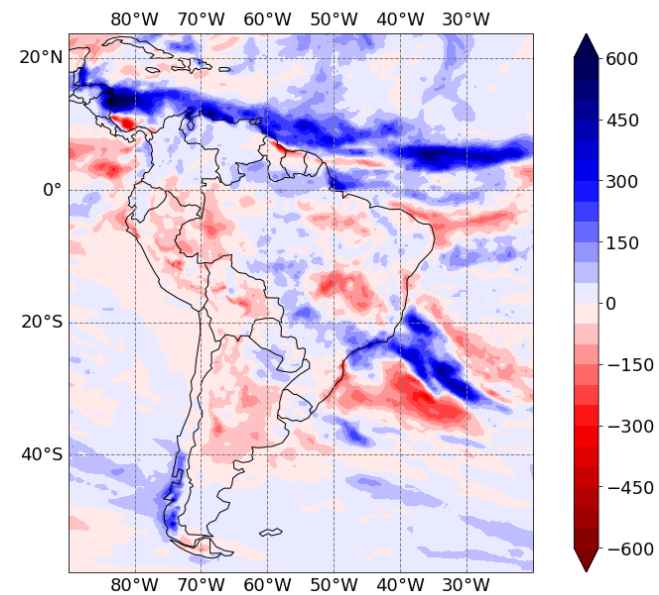


2006

Anomalia PREC(mm) MSWEP - 2006 DJF

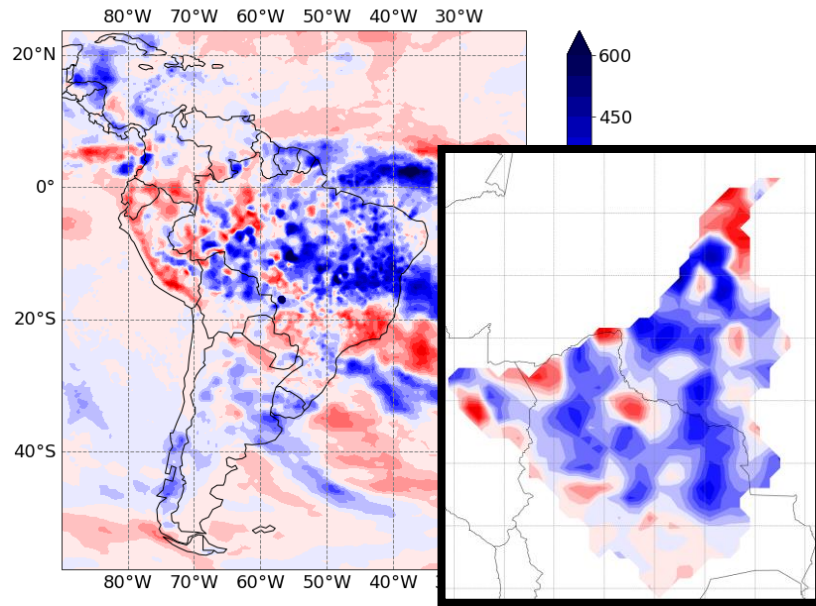


Anomalia PREC(mm) Eta40km-Besm - 2006 DJF



OBSERVADO

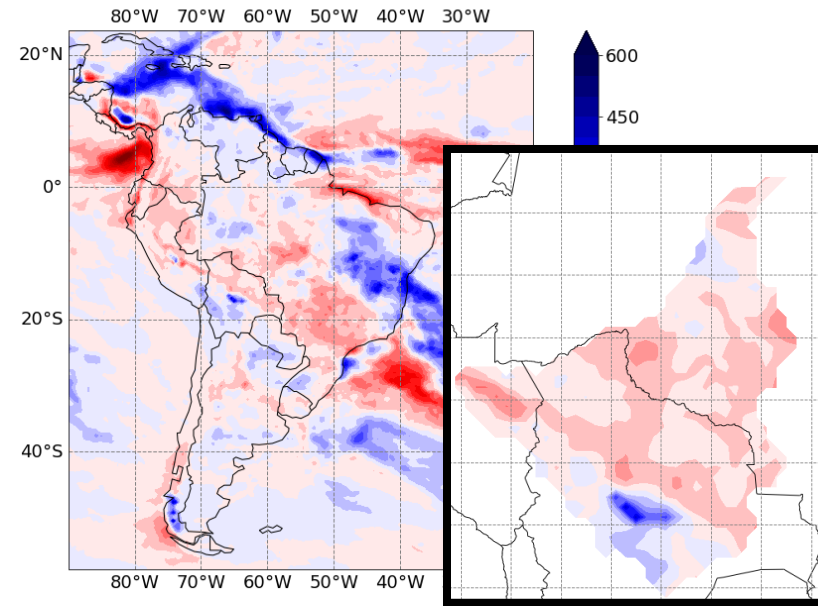
Anomalia PREC(mm) MSWEP - 1990 DJF



1990

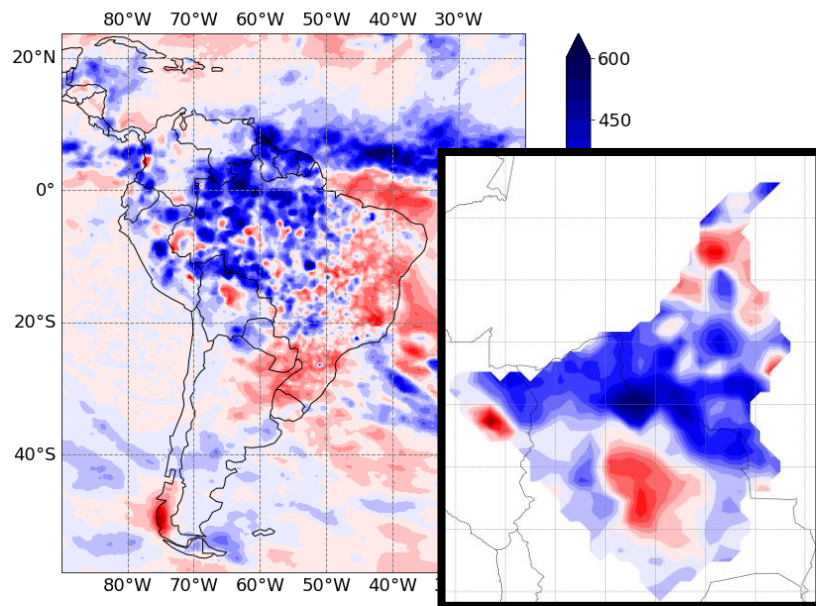
PREVISTO

Anomalia PREC(mm) Eta40km-Besm - 1990 DJF

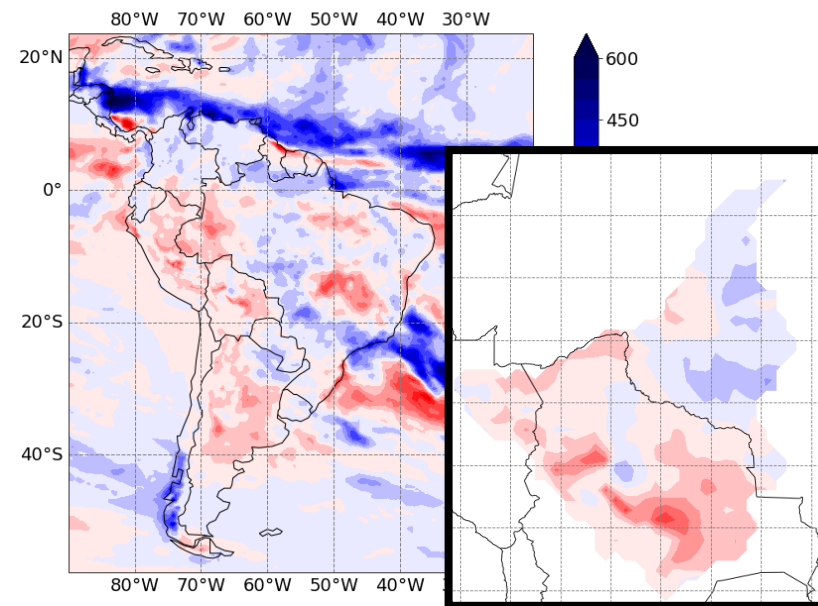


2006

Anomalia PREC(mm) MSWEP - 2006 DJF

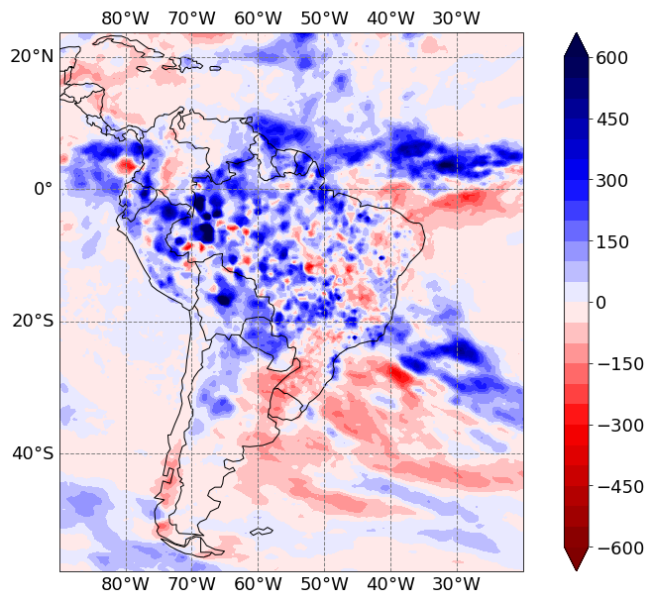


Anomalia PREC(mm) Eta40km-Besm - 2006 DJF



OBSERVADO

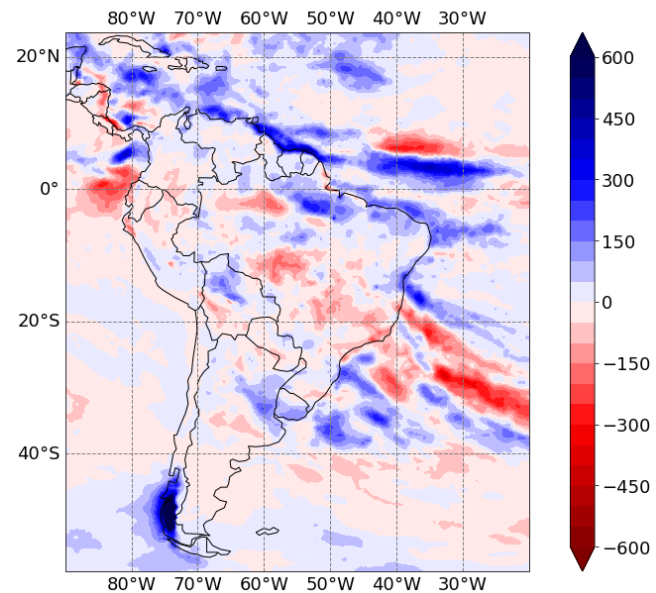
Anomalia PREC(mm) MSWEP - 2008 DJF



2008

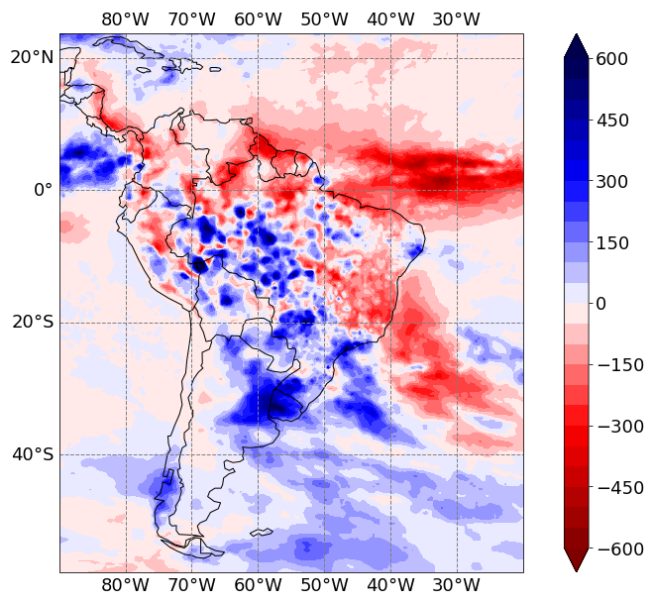
PREVISTO

Anomalia PREC(mm) Eta40km-Besm - 2008 DJF

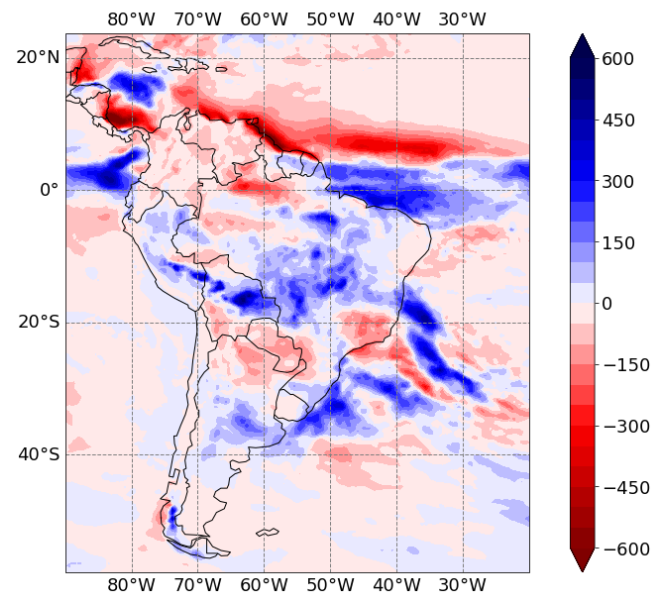


2010

Anomalia PREC(mm) MSWEP - 2010 DJF

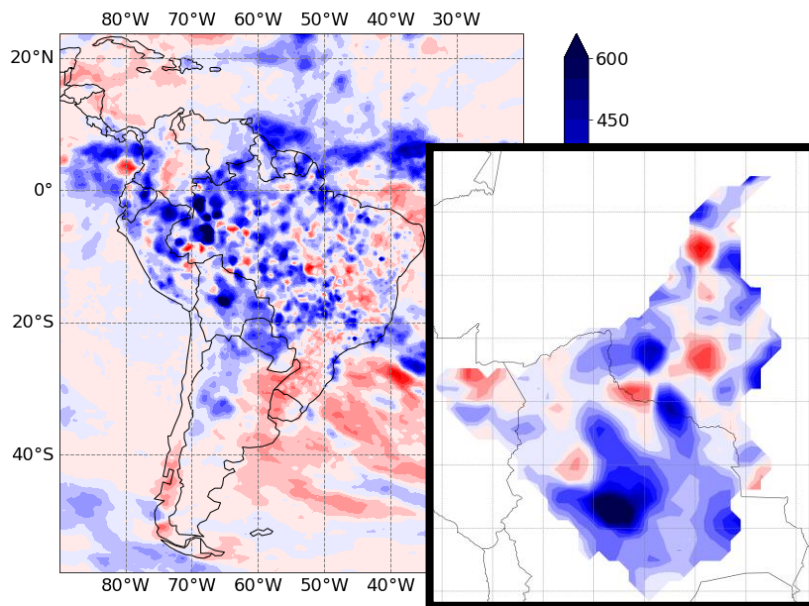


Anomalia PREC(mm) Eta40km-Besm - 2010 DJF



OBSERVADO

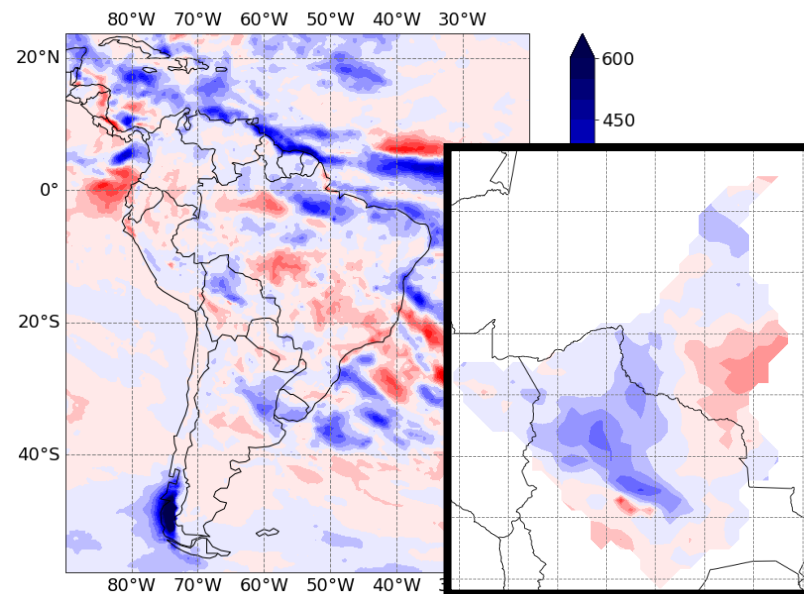
Anomalia PREC(mm) MSWEP - 2008 DJF



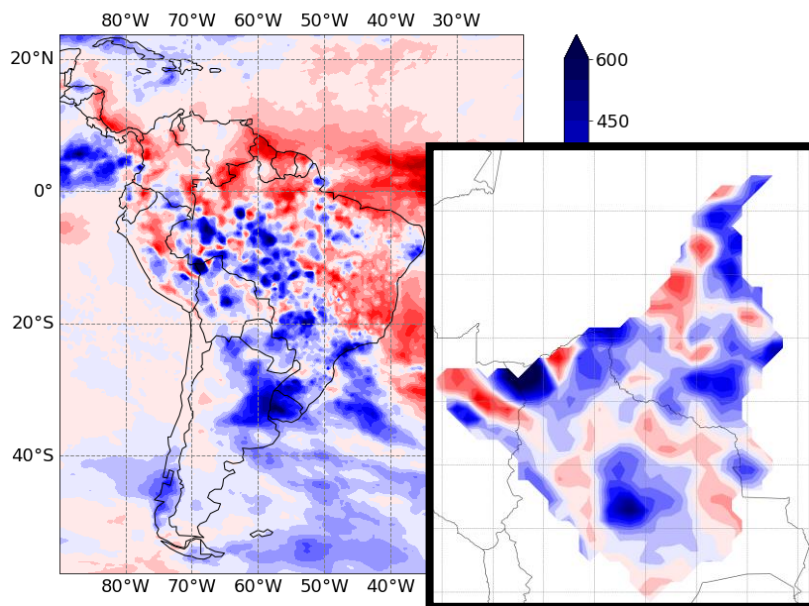
2008

PREVISTO

Anomalia PREC(mm) Eta40km-Besm - 2008 DJF

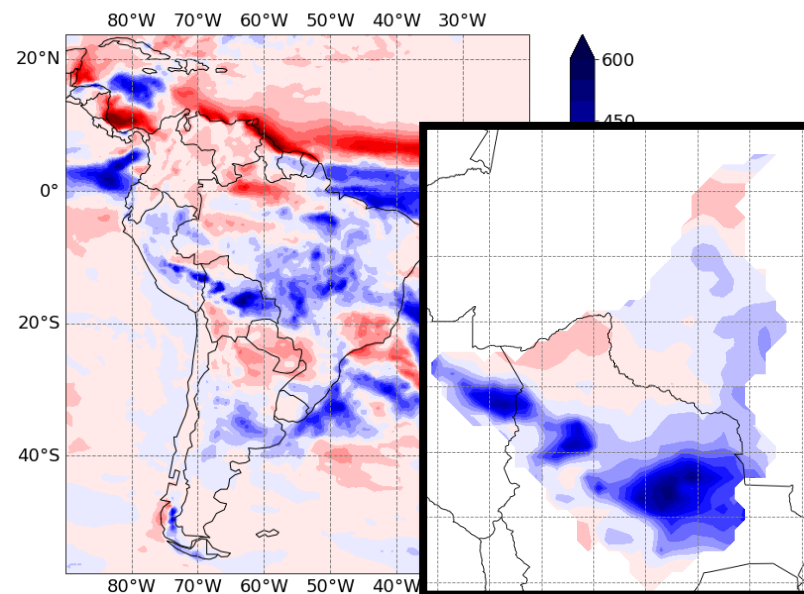


Anomalia PREC(mm) MSWEP - 2010 DJF

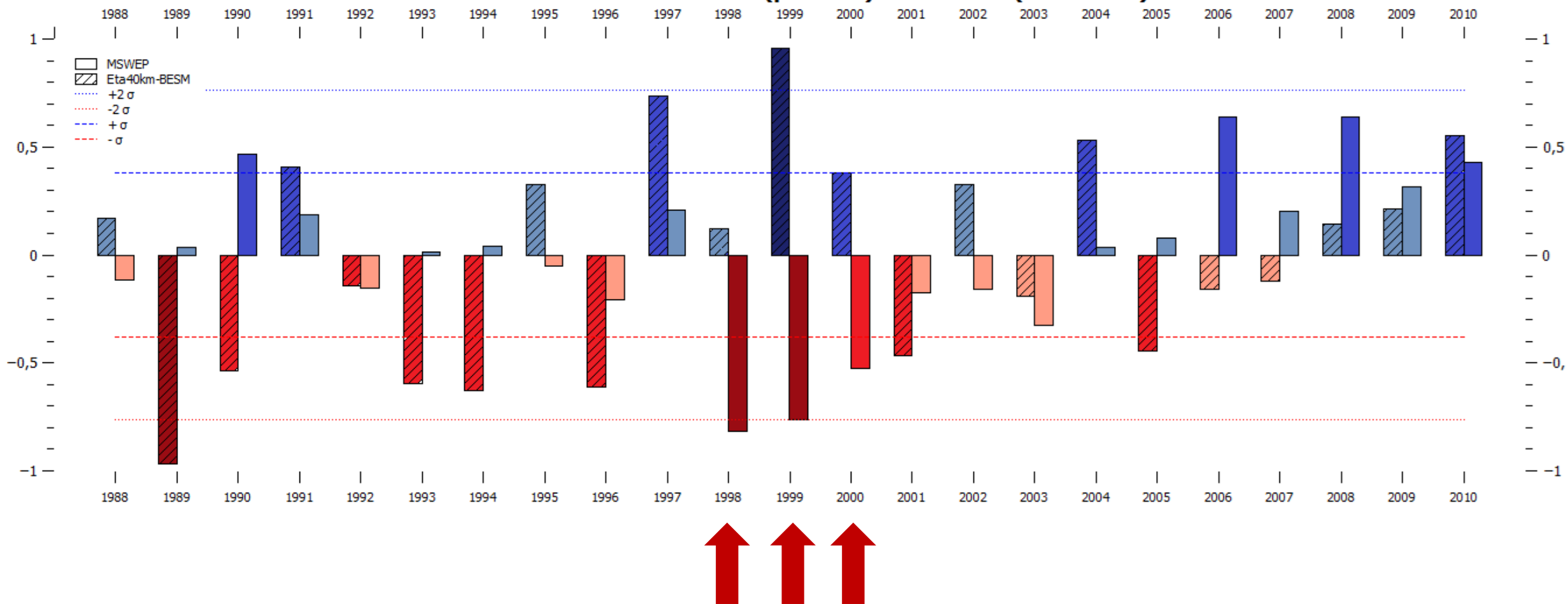


2010

Anomalia PREC(mm) Eta40km-Besm - 2010 DJF



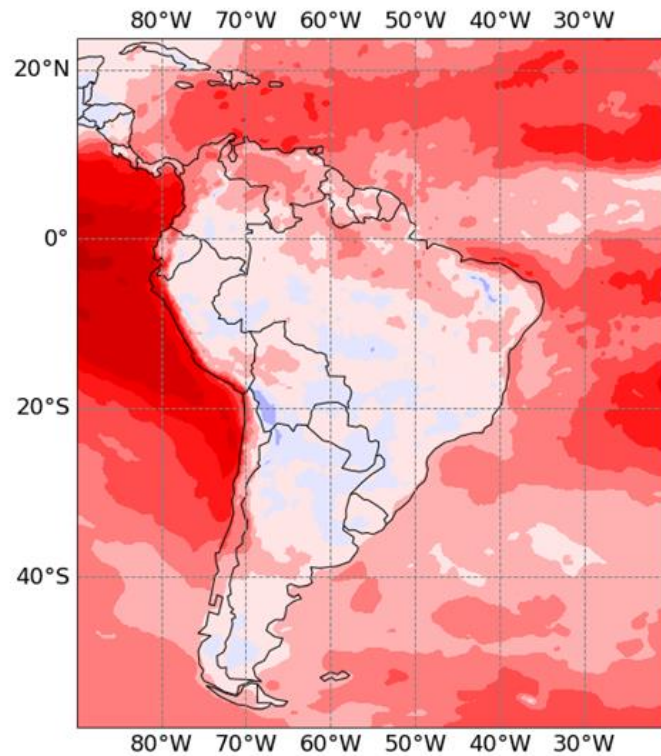
Série temporal de anomalias padronizadas de precipitação para DJF Rio Madeira - Eta40km-BESM (previsto) vs. MSWEP (observado)



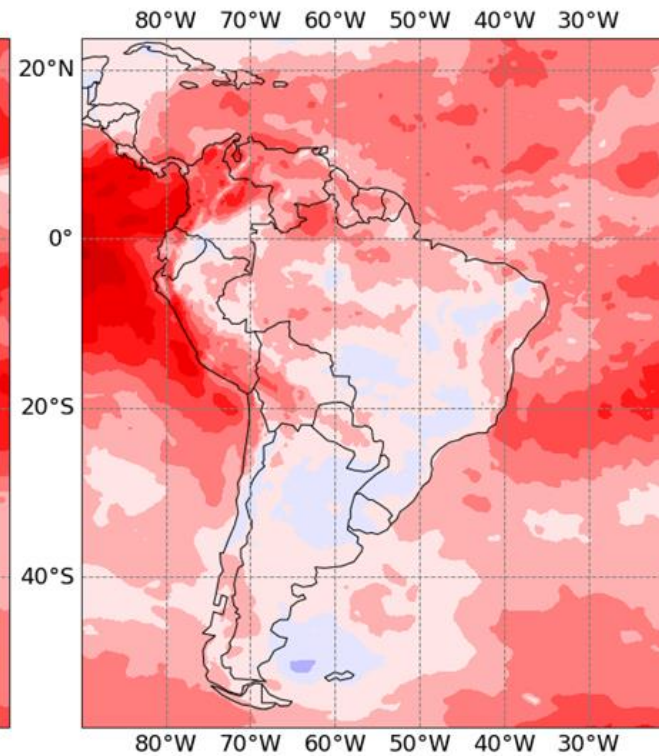
Correlação das previsões do Eta40km-BESM vs. ERA5 (1988-2010)

Temperatura do ar a 2m

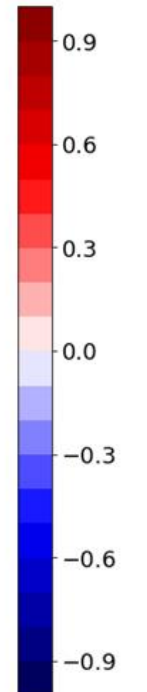
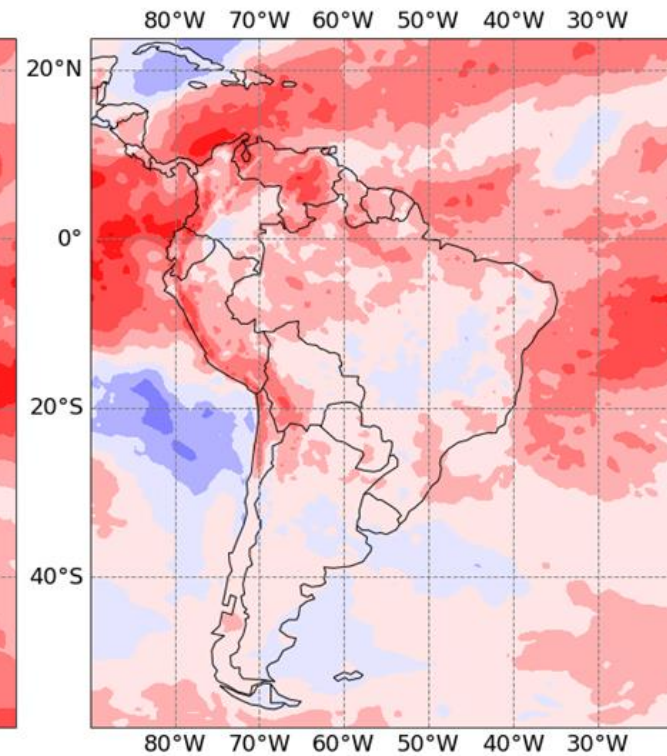
Dezembro



Janeiro



Fevereiro



Correlação das previsões do Eta40km-BESM vs. ERA5 (1988-2010)

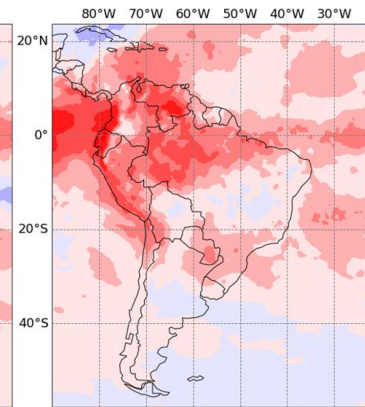
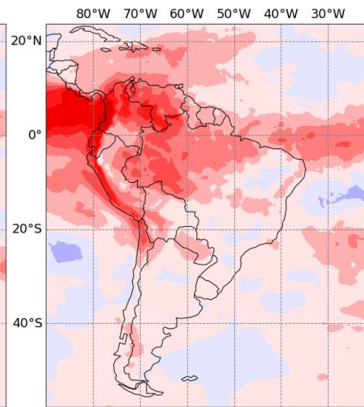
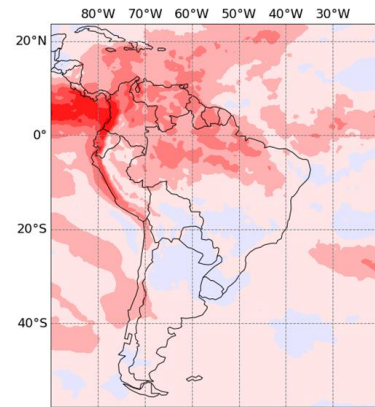
Temperatura do ar

Dezembro

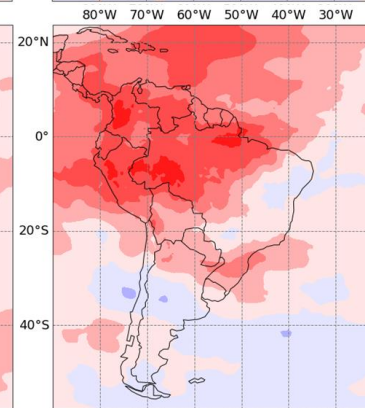
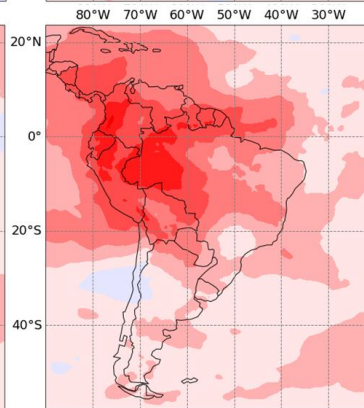
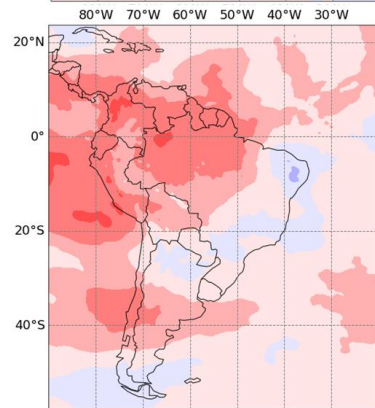
Janeiro

Fevereiro

850 hPa



500 hPa



250 hPa

